



805/1 Kyle Street Arncliffe NSW

2 2 1

Experience luxury and lifestyle in this stunning split-level 3-bedroom penthouse and an expansive private rooftop terrace. With a total strata size of 160sqm, soaring 5.6m high ceilings in the living area, and sweeping city and sunset views, this residence delivers space, style and sophistication in the heart of Arncliffe - just 270m from the train station.

Type : Apartment
Price : \$ 865,000
Building Size : 160 sqm
View : <https://www.vassagroup.com.au/sale/nsw/st-george/arncliffe/residential/apartment/8308646>

Enjoy easy access to Wolli Creek, Sydney CBD, and the eastern suburbs, with a full range of amenities right at your doorstep.

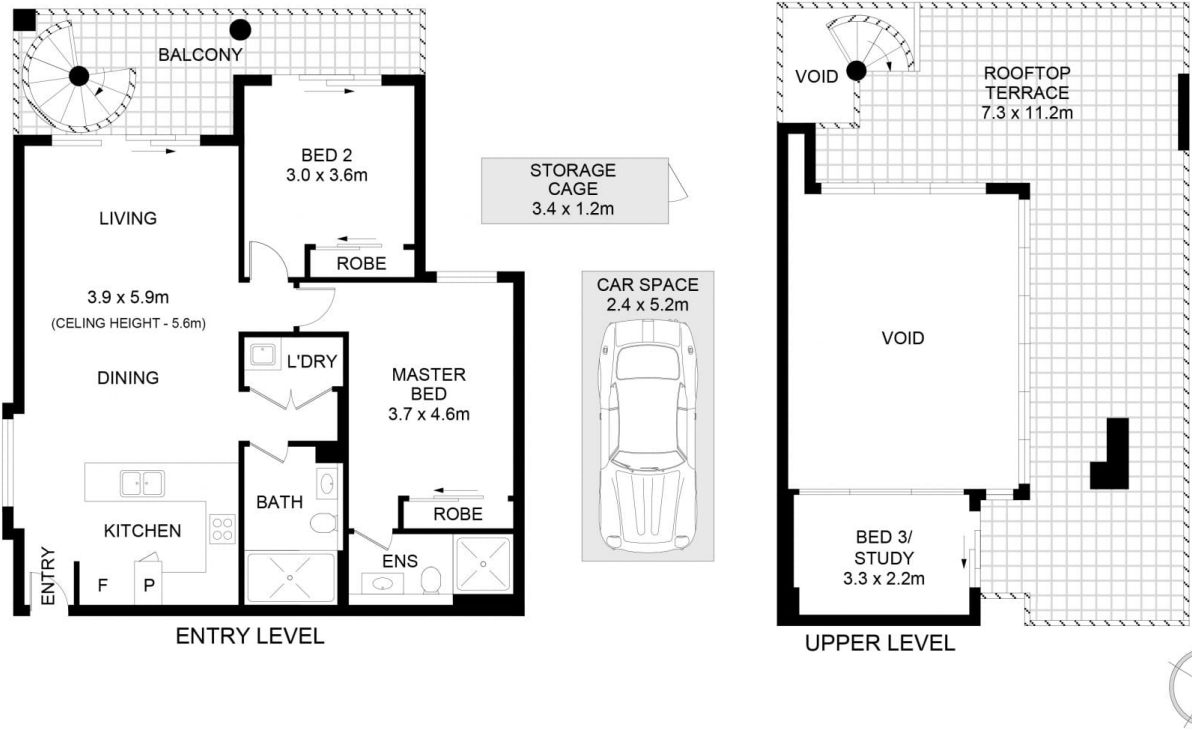
Key Features:

- Split-level design with exceptional layout and privacy
- Total strata size: 160sqm including massive rooftop entertaining terrace
- Soaring 5.6m high ceilings in the light-filled living area
- Gourmet kitchen with Caesarstone benchtops & European appliances
- Two large bedrooms with built-ins; master with ensuite



Luce Lv
02 9268 0086

[For full version visit the website](https://www.vassagroup.com.au)



805/1 Kyle Street, Arncliffe



Whilst every attempt has been made to ensure the accuracy of this floorplan, measurements are approximate and therefore the intended use of this image is for illustrative purposes only and is subject to strict copyright. For more information please contact 9AM Productions.