



415/5 Bidjigal Road Arncliffe NSW

1 1 1

Combining space and style, Park Lane offers convenient and contemporary living in Arncliffe, a suburb in Sydney south, just 9km from the Sydney CBD, and only a 5 minute drive to Sydney airport.

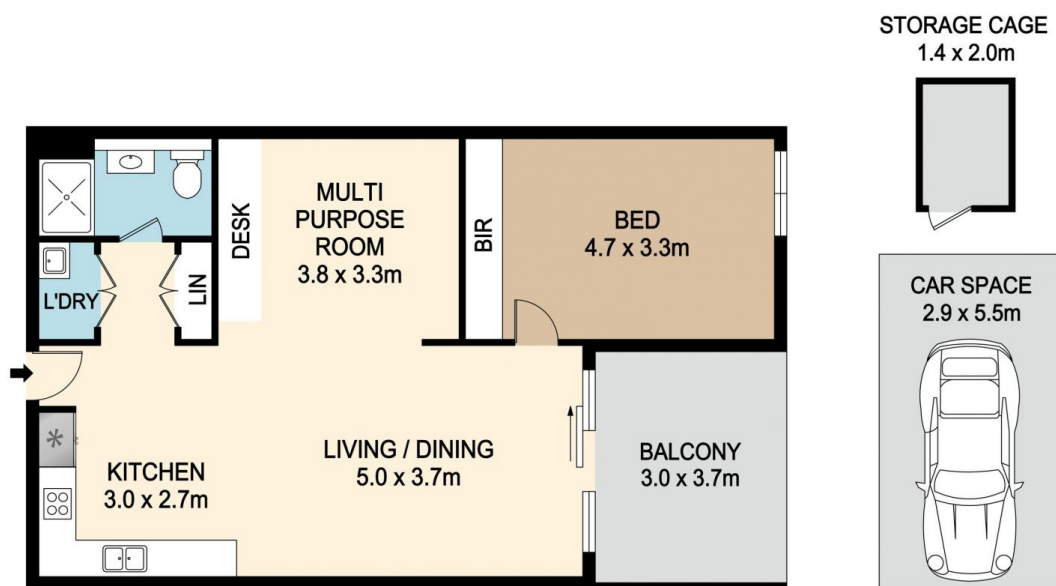
- 1 bedroom + huge study room, total size 78m2
- Premium finishes, Miele appliances, ducted range hood & Daikin ducted air-conditioning
- 3 major train stations and shopping centre within 600, 900m
- Lush adjoining landscaped park
- Top floor private rooftop terrace with stunning views
- Oversized luxury apartment with parking & storage
- Multitude of premium schools & universities in the area
- 5 mins to Sydney airport, only 9km to Sydney CBD
- Approx. levies per quarter: strata \$1,050, water \$170, council \$270

Building Size : 78 sqm

View : <https://www.vassagroup.com.au/sale/nsw/st-george/arncliffe/residential/apartment/7957242>



Luce Lv
02 9268 0086



415/5 BIDJIGAL ROAD, ARNCLIFFE



DISCLAIMER : PLANS SHOWN ARE FOR MARKETING PURPOSES ONLY. ALL DIMENSIONS ARE APPROXIMATE AND NOT TO SCALE. THEY ARE SUBJECT TO ERRORS AND INACCURACIES AND NO LIABILITY WILL BE ACCEPTED. INTERESTED PARTIES SHOULD MAKE THEIR OWN INQUIRES.

