

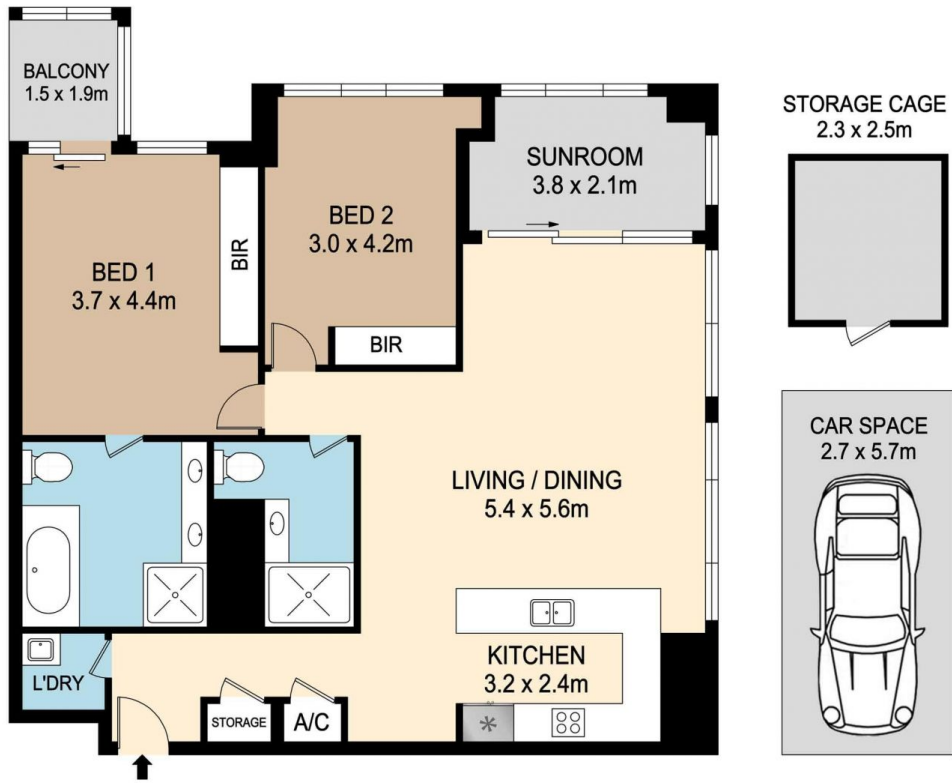
5103/93 Liverpool Street Sydney NSW

2 2 1

Located in World Tower, prime location of Sydney CBD, only minutes walk to Chinatown, Hyde Park, Town Hall, Darling Harbour

- Hyde Park view, ocean view and city views
- Large size winter garden and private balcony
- Open plan, gas kitchen with stone benchtops, quality stainless steel appliances and ample storage space
- Two spacious bedrooms with built-in-wardrobes, easy to be converted to three beds
- Internal laundry with dryer and ducted air-conditioning
- Secure basement parking
- 24-hour concierge, indoor aquatic centre including pool, sauna and spa
- Residents also have access to private theatre, fitness centre and games rooms, library and laundry room. Heating Swimming Pool, Spa, Sunna. Table tennis and pools table room.

Price : \$1,800,000
Building Size : 99 sqm
View : <https://www.vassagroup.com.au/sale/nsw/sydney-city/sydney/residential/apartment/7738730>



5103/93 LIVERPOOL STREET, SYDNEY



DISCLAIMER : PLANS SHOWN ARE FOR MARKETING PURPOSES ONLY. ALL DIMENSIONS ARE APPROXIMATE AND NOT TO SCALE. THEY ARE SUBJECT TO ERRORS AND INACCURACIES AND NO LIABILITY WILL BE ACCEPTED. INTERESTED PARTIES SHOULD MAKE THEIR OWN INQUIRES.