



Level 3/94/40-52 Barina Downs Road Norwest NSW

2 🛏 2 🚿 2 🚗

This modest and modern apartment is located in one of the Baulkham Hill's premier residential district, mere minutes journey to Stockland Mall and Norwest Business Park. Located minutes away from M7 Motorway and Windsor Road - ideal residents if you require easy direct access to City, Castle Hill, Parramatta and in particular the prestigious Selective Baulkham Hills High School. Add the benefit and convenience of being just minutes away from Norwest Metro station and Market Town.

Price : \$ 725,000
Building Size : 103 sqm
View : <https://www.vassagroup.com.au/sale/nsw/hills/norwest/residential/apartment/7561536>

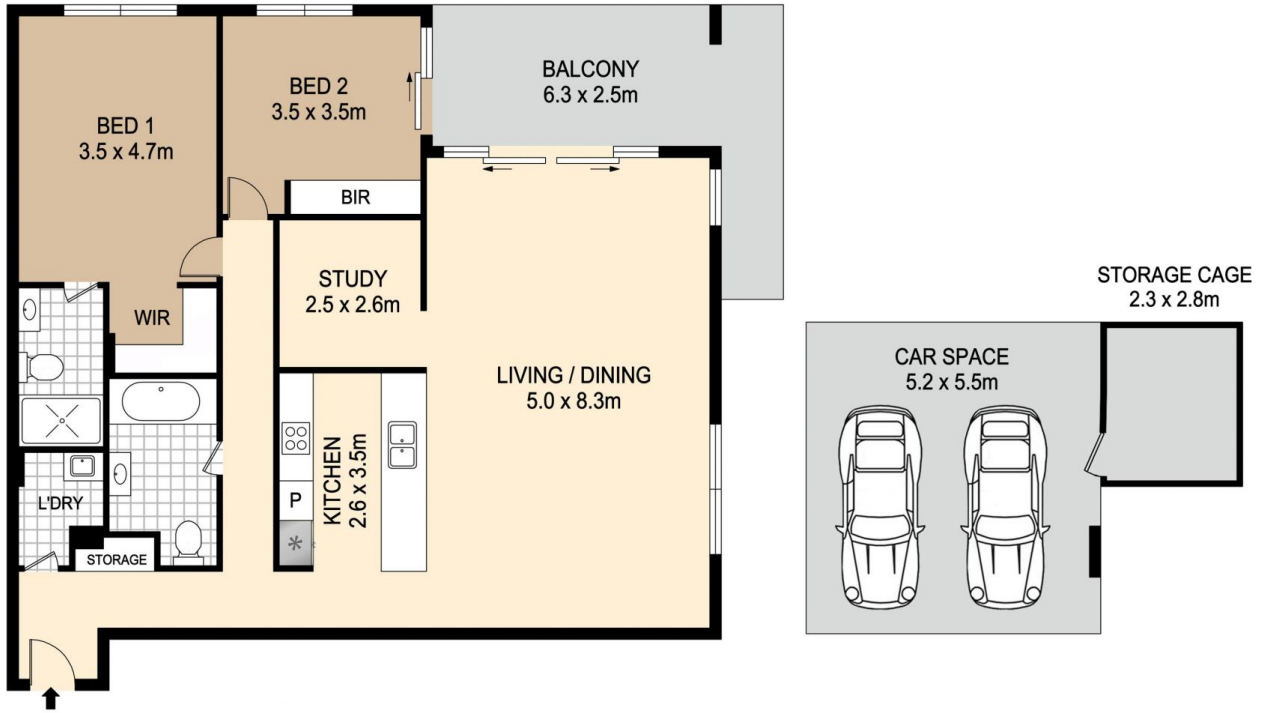
Situated in the great complex Block E with security intercom, the apartments feature modern kitchen and bathroom fixtures, and vertical blinds, this apartment sports an open plan living area, modern tiled bathrooms and flow through balcony - perfect for that morning or afternoon coffee.



Troy Li
02 9268 0086

This accommodation comprises:

- Practical open living space
- 2.8m high ceiling
- Bedroom - including built in wardrobes
- Two car space - undercover allocated space



94/50-52 BARINA DOWNS ROAD, NORWEST



DISCLAIMER : PLANS SHOWN ARE FOR MARKETING PURPOSES ONLY. ALL DIMENSIONS ARE APPROXIMATE AND NOT TO SCALE. THEY ARE SUBJECT TO ERRORS AND INACCURACIES AND NO LIABILITY WILL BE ACCEPTED. INTERESTED PARTIES SHOULD MAKE THEIR OWN INQUIRES.

