

322/272-276 Railway Terrace Guildford NSW

3 2 2

You will not find a better location in Guildford.

This modern 3 bedroom unit features:

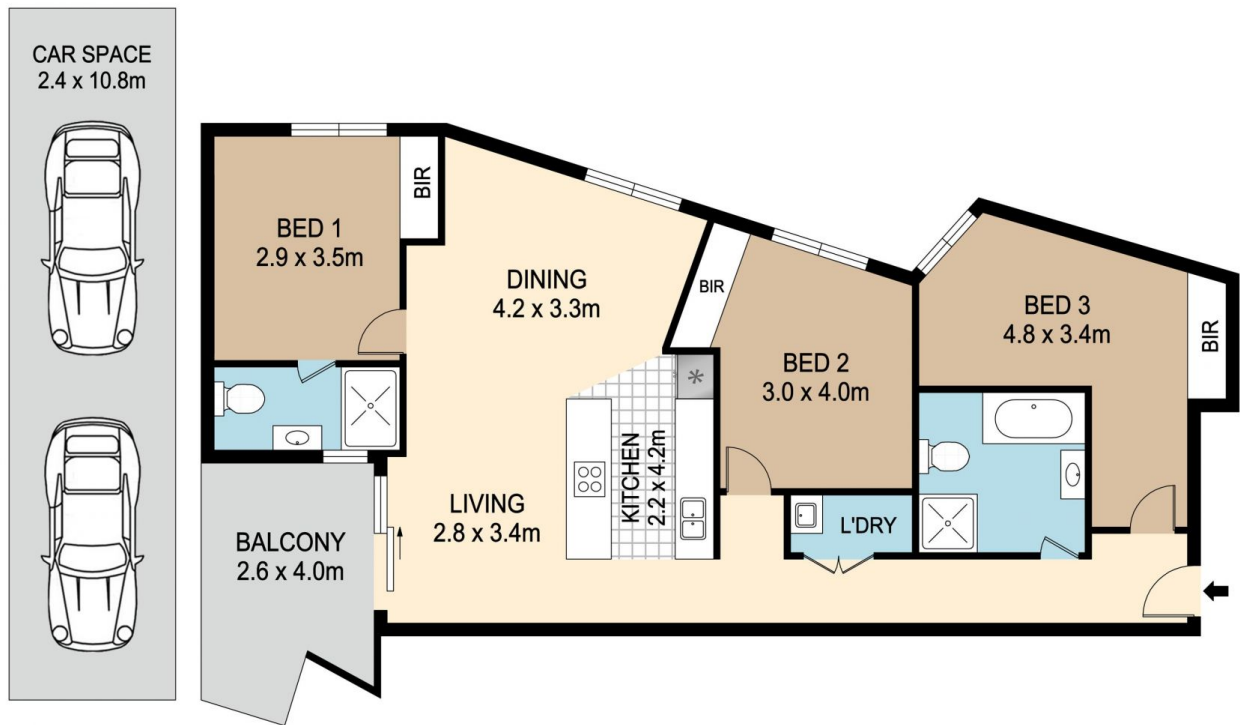
Freshly painted

Property Description:

- * Three Bedrooms
- * Ensuite Bathroom
- * Walk In Wardrobe
- * Built-In Wardrobes
- * Stainless Steel Appliances
- * Stone Benchtops
- * Gas Cooking
- * Reverse Cycle Split System Air-conditioning
- * 2 Secure Car Parking Spaces With Direct Lift Access
- * Security Intercom
- * Balcony
- * Proposed Strata Levies \$650 per Qtr
- * Council Rates \$312 per Qtr
- * Water \$154 per Qtr

Type : Apartment
Building Size : 131 sqm
View : <https://www.vassagroup.com.au/sale/nsw/parramatta/guildford/residential/apartment/7147109>

[For full version visit the website](https://www.vassagroup.com.au)



22/272-276 RAILWAY TERRACE, GUILDFORD

DISCLAIMER : PLANS SHOWN ARE FOR MARKETING PURPOSES ONLY. ALL DIMENSIONS ARE APPROXIMATE AND NOT TO SCALE. THEY ARE SUBJECT TO ERRORS AND INACCURACIES AND NO LIABILITY WILL BE ACCEPTED. INTERESTED PARTIES SHOULD MAKE THEIR OWN INQUIRES.

