



2109/486 Pacific Highway St Leonards NSW

2 🚗 2 🚗 1 🚗

St.Leonards Square exemplifies Mirvac's reputation for sophisticated living in Sydney with superb amenity, exceptional city views and a vibrant ground floor plaza, this is an iconic destination that will define St.Leonards for years to come.

- Spacious living and dining with exceptional views & storages
- Stone kitchen island bench top with Miele appliances
- Exclusive colour scheme and feature pendant lighting
- Ducted air-conditioning and video intercom
- Internal laundry with dryer included
- Secure car space and storage cage in the basement
- Dedicated concierge, 24 hours security
- Gym, pool, spa, steam, sauna and BBQ facilities
- Metres from St Leonards Station, parks, Crows Nest Village

Strata: \$1,650 Per Quarter approx..
 Water: \$150 Per Quarter approx..
 Council: \$350 Per Quarter approx..

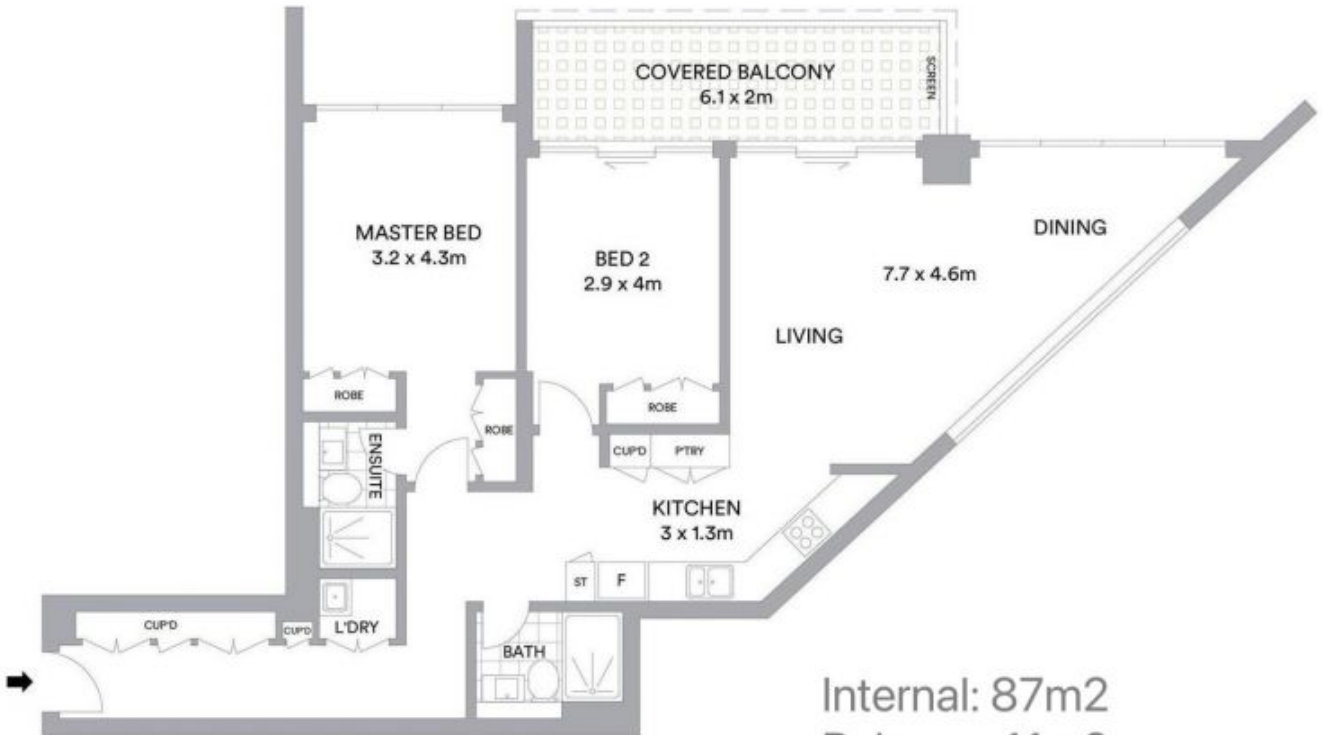
Contact: Alex LU 0406 161 518

Price : \$ 1,318,000
Building Size : 98 sqm
View : <https://www.vassagroup.com.au/sale/nsw/north-shore-lower/st-leonards/residential/apartment/6924706>



Troy Li
 02 9268 0086

Alex Lu
 02 9268 0086



Internal: 87m²
Balcony: 11m²
Total: 98m²

