



**804/14 Shoreline Drive Rhodes NSW**

2 🛏 2 🚿 1 🚗

Only mins to the water's edge, train station, a short stroll to Rhodes Shopping Center, this home presents the perfect opportunity for those looking for a practical layout and well positioned, with plenty of outdoor space.

**Type** : Apartment  
**Price** : \$ 968,500  
**Building Size** : 115 sqm  
**View** : <https://www.vassagroup.com.au/sale/nsw/inner-west/rhodes/residential/apartment/6903340>

What we like about the property...

- Mirvac Built with low strata levy and easy maintenance
- Massive living area opening out to wrap-around balcony
- Master bedroom with walk-in robe and built-in robe, separate study area in living room
- Designer kitchen with stone bench tops and quality stainless appliances
- Ducted air-conditioning, internal laundry with dryer
- Secure car spaces and storage cage
- Secure lift access, manicured gardens
- Stroll to water's edge, Rhodes Shopping Centre and train station

[For full version visit the website](https://www.vassagroup.com.au)

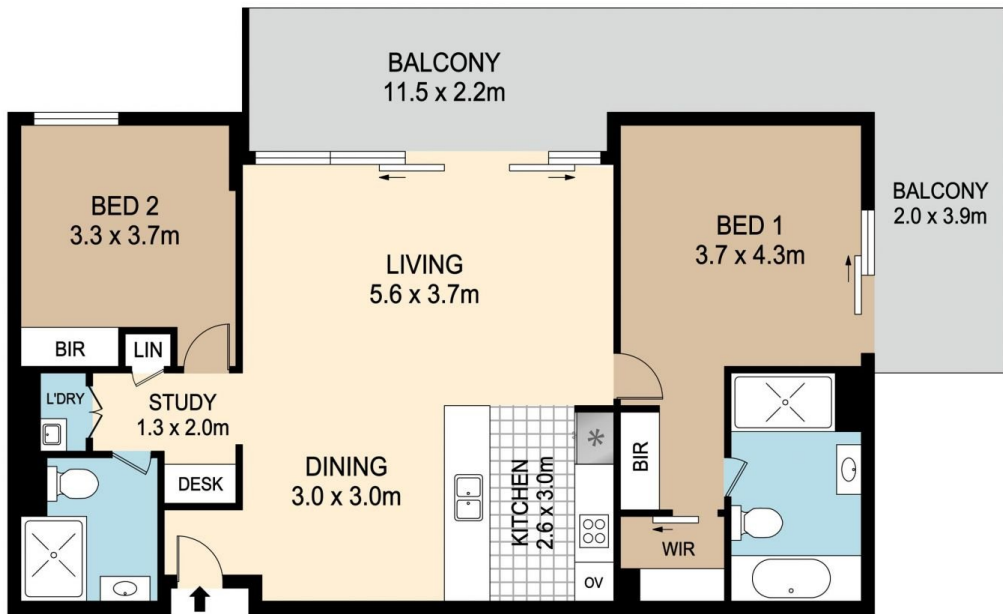
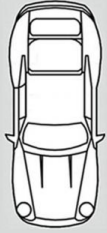


**Troy Li**  
**02 9268 0086**

STORAGE CAGE  
2.1 x 1.5m



CAR SPACE  
2.5 x 5.7m



## 804/14 SHORELINE DRIVE, RHODES



DISCLAIMER : PLANS SHOWN ARE FOR MARKETING PURPOSES ONLY. ALL DIMENSIONS ARE APPROXIMATE AND NOT TO SCALE. THEY ARE SUBJECT TO ERRORS AND INACCURACIES AND NO LIABILITY WILL BE ACCEPTED. INTERESTED PARTIES SHOULD MAKE THEIR OWN INQUIRES.

